

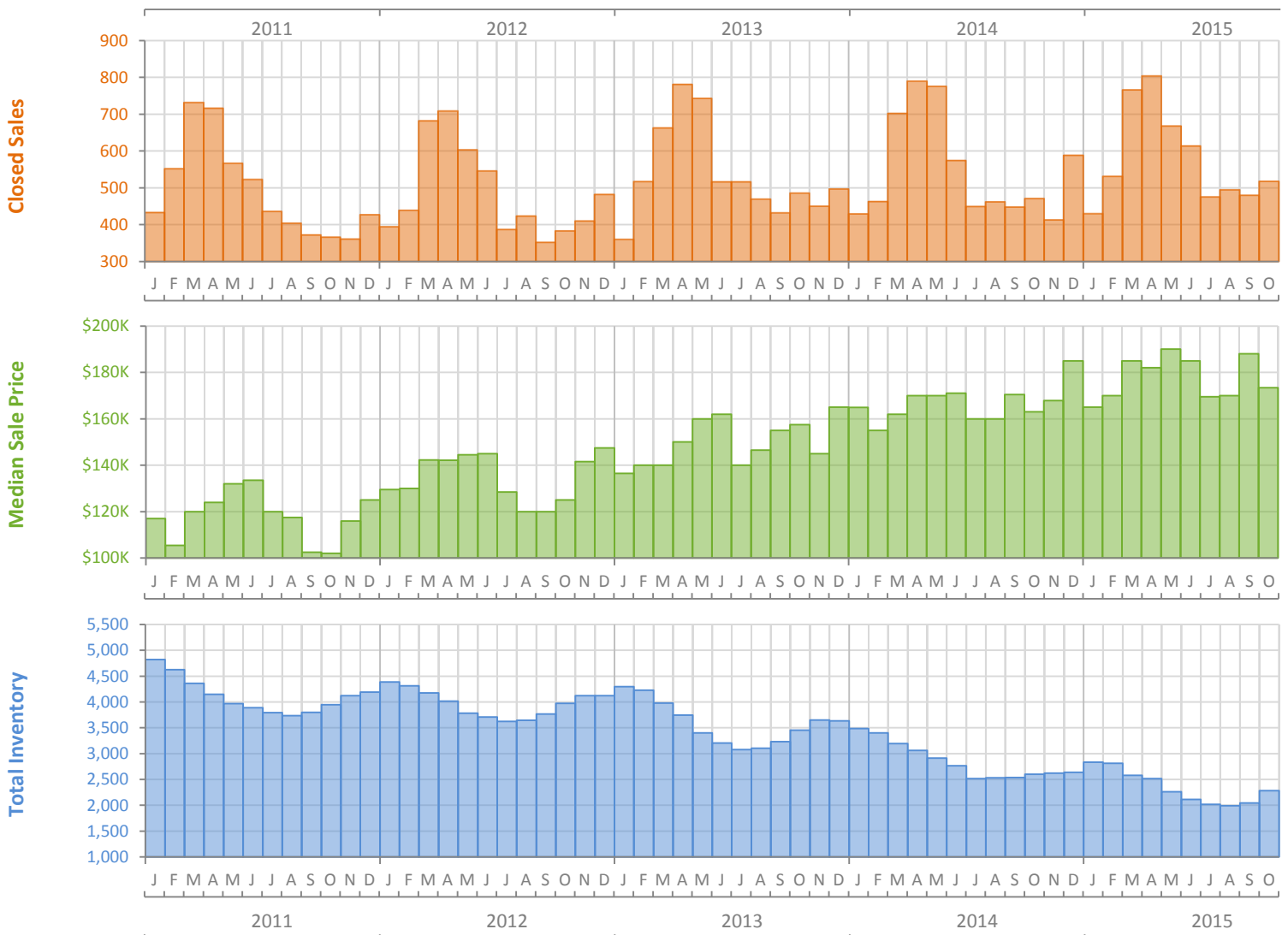
Monthly Market Summary - October 2015

Townhouses and Condos

Lee County



| | October 2015 | October 2014 | Percent Change Year-over-Year |
|--|--------------|--------------|-------------------------------|
| Closed Sales | 518 | 471 | 10.0% |
| Cash Sales | 333 | 317 | 5.0% |
| New Pending Sales | 557 | 588 | -5.3% |
| New Listings | 807 | 767 | 5.2% |
| Median Sale Price | \$173,450 | \$163,000 | 6.4% |
| Average Sale Price | \$231,598 | \$216,309 | 7.1% |
| Median Days on Market | 43 | 53 | -18.9% |
| Avg. Percent of Original List Price Received | 94.2% | 93.1% | 1.2% |
| Pending Inventory | 700 | 793 | -11.7% |
| Inventory (Active Listings) | 2,280 | 2,601 | -12.3% |
| Months Supply of Inventory | 4.0 | 4.8 | -15.8% |



Monthly Distressed Market - October 2015

Townhouses and Condos

Lee County



| | | October 2015 | October 2014 | Percent Change Year-over-Year |
|-----------------|-------------------|--------------|--------------|-------------------------------|
| Traditional | Closed Sales | 469 | 399 | 17.5% |
| | Median Sale Price | \$178,000 | \$184,000 | -3.3% |
| Foreclosure/REO | Closed Sales | 42 | 65 | -35.4% |
| | Median Sale Price | \$141,250 | \$86,400 | 63.5% |
| Short Sale | Closed Sales | 7 | 7 | 0.0% |
| | Median Sale Price | \$123,111 | \$122,000 | 0.9% |

