

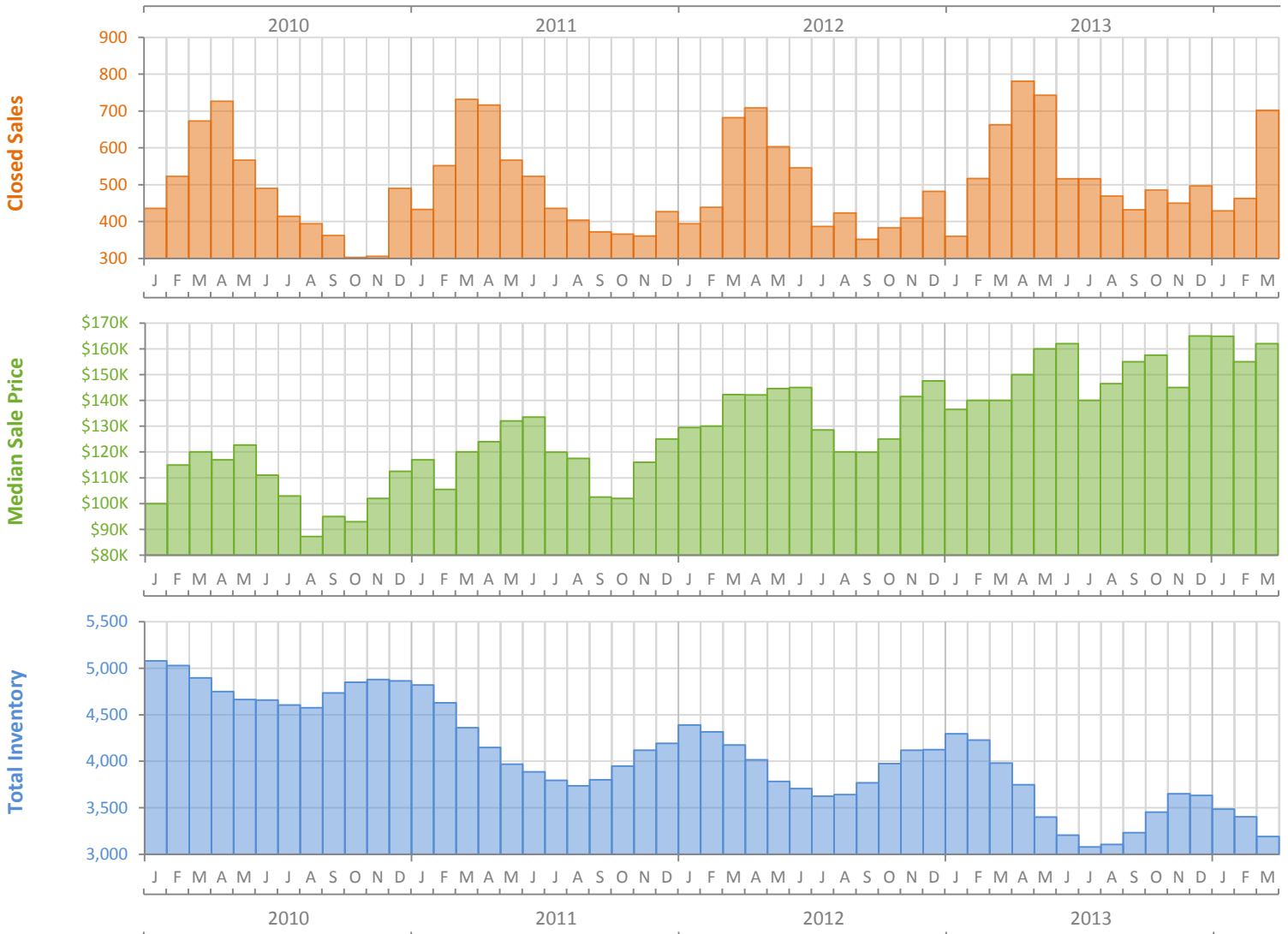
Monthly Market Summary - March 2014

Townhouses and Condos

Lee County



| | March 2014 | March 2013 | Percent Change Year-over-Year |
|--|------------|------------|-------------------------------|
| Closed Sales | 702 | 663 | 5.9% |
| Cash Sales | 539 | 504 | 6.9% |
| New Pending Sales | 998 | 904 | 10.4% |
| New Listings | 851 | 898 | -5.2% |
| Median Sale Price | \$162,000 | \$140,000 | 15.7% |
| Average Sale Price | \$217,598 | \$184,548 | 17.9% |
| Median Days on Market | 63 | 75 | -16.0% |
| Avg. Percent of Original List Price Received | 92.6% | 92.1% | 0.5% |
| Pending Inventory | 1,309 | 1,367 | -4.2% |
| Inventory (Active Listings) | 3,192 | 3,981 | -19.8% |
| Months Supply of Inventory | 5.9 | 8.2 | -27.8% |



Monthly Distressed Market - March 2014

Townhouses and Condos

Lee County



| | | March 2014 | March 2013 | Percent Change Year-over-Year |
|-----------------|-------------------|------------|------------|-------------------------------|
| Traditional | Closed Sales | 627 | 585 | 7.2% |
| | Median Sale Price | \$169,000 | \$150,000 | 12.7% |
| Foreclosure/REO | Closed Sales | 66 | 55 | 20.0% |
| | Median Sale Price | \$80,050 | \$86,500 | -7.5% |
| Short Sale | Closed Sales | 9 | 23 | -60.9% |
| | Median Sale Price | \$123,000 | \$108,000 | 13.9% |

