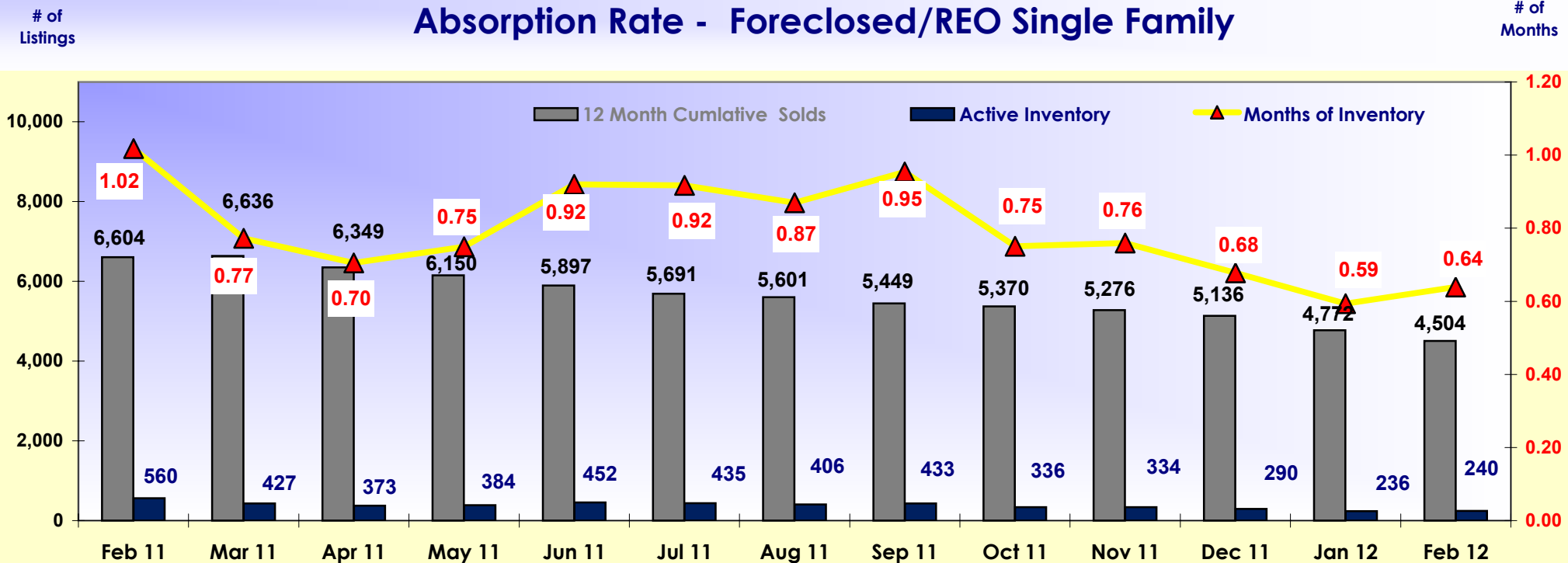
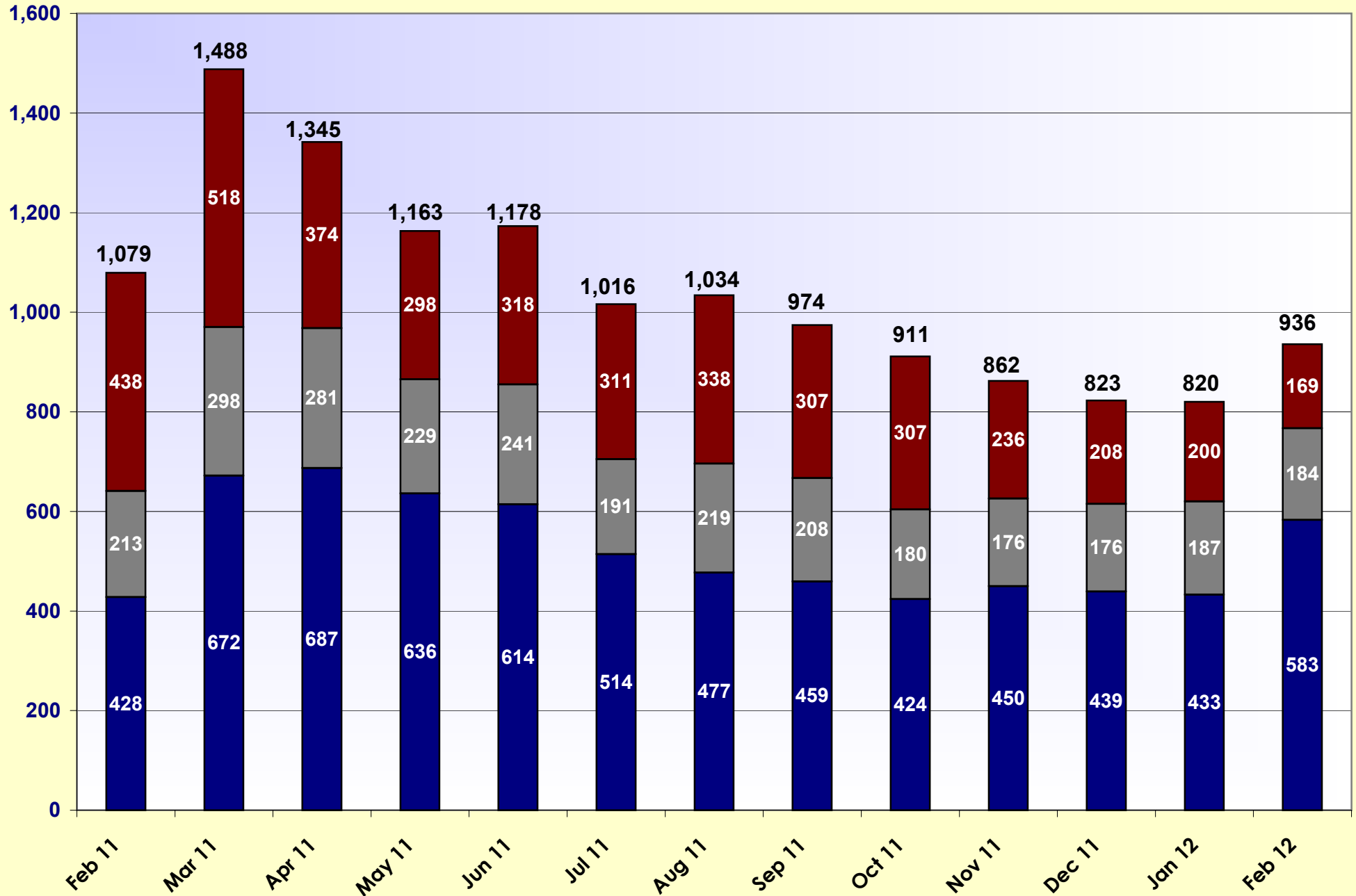


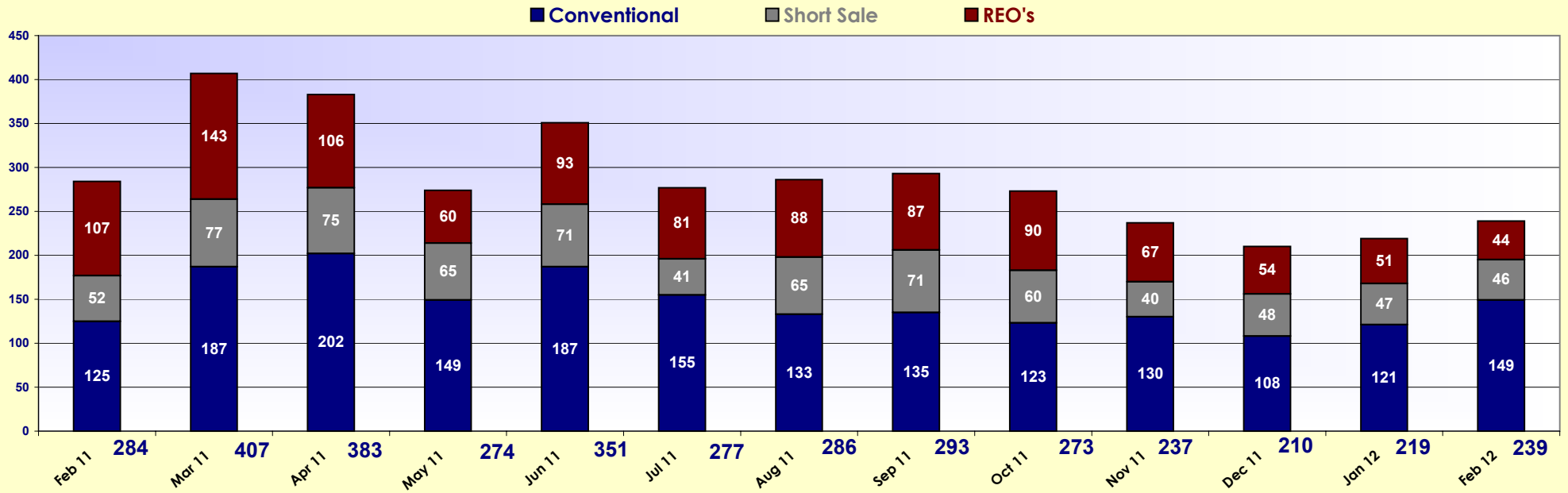
Absorption Rate - Foreclosed/REO Single Family



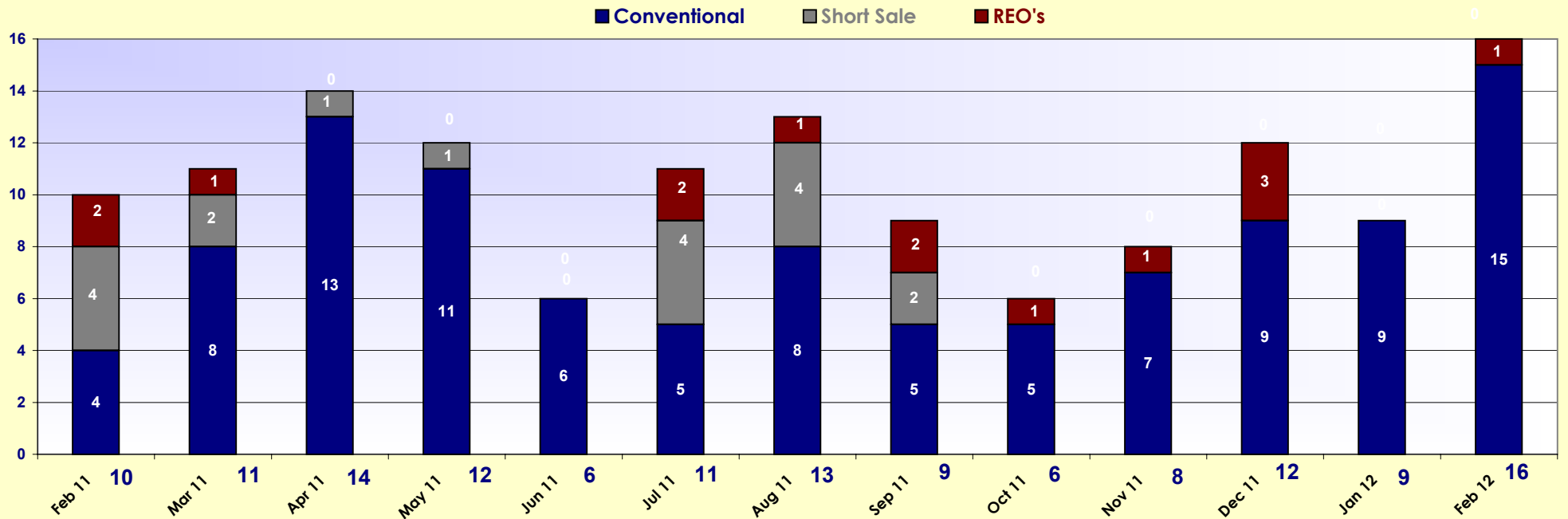
Absorption (NAR's calculation) - # of Sold Divided by 12 (# of Months) gives you the per month Absorption Rate. Divide Rate into the Actives for the Month. This gives you the Monthly Absorption.

■ Conventional ■ Short Sale ■ REO's

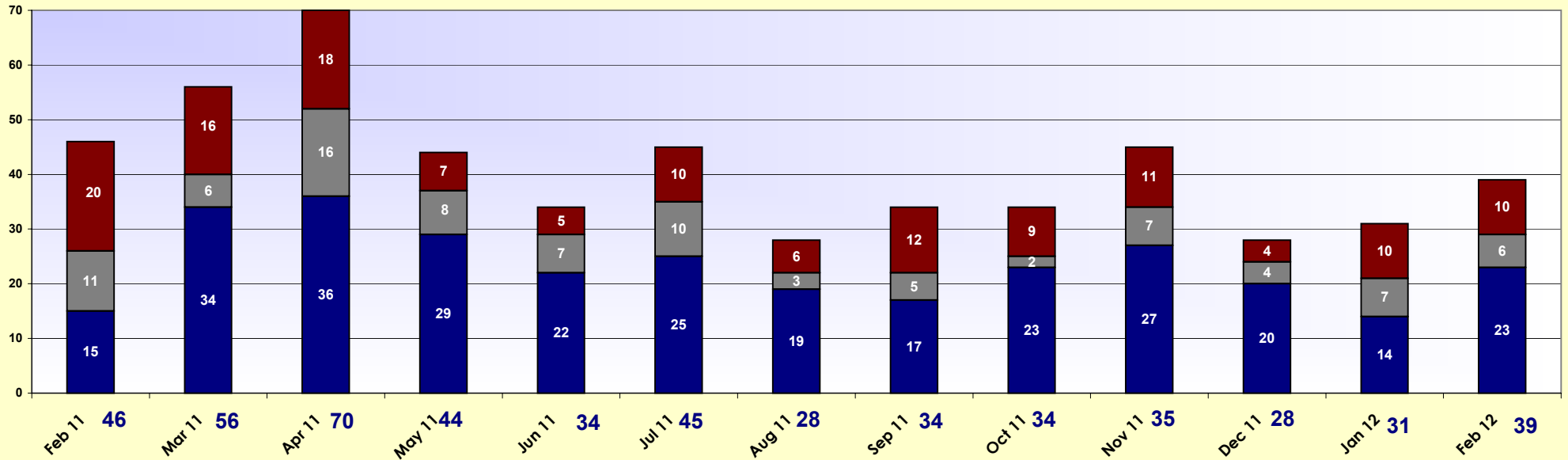




2011 / 2012 Sold Single Family - Fort Myers Beach

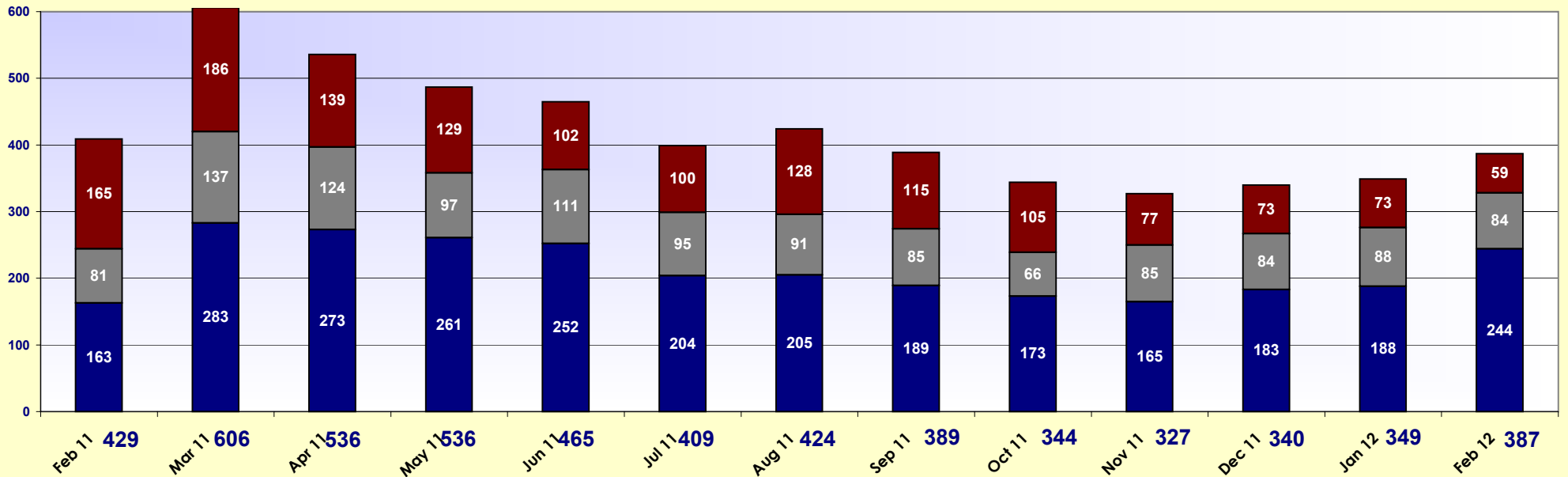


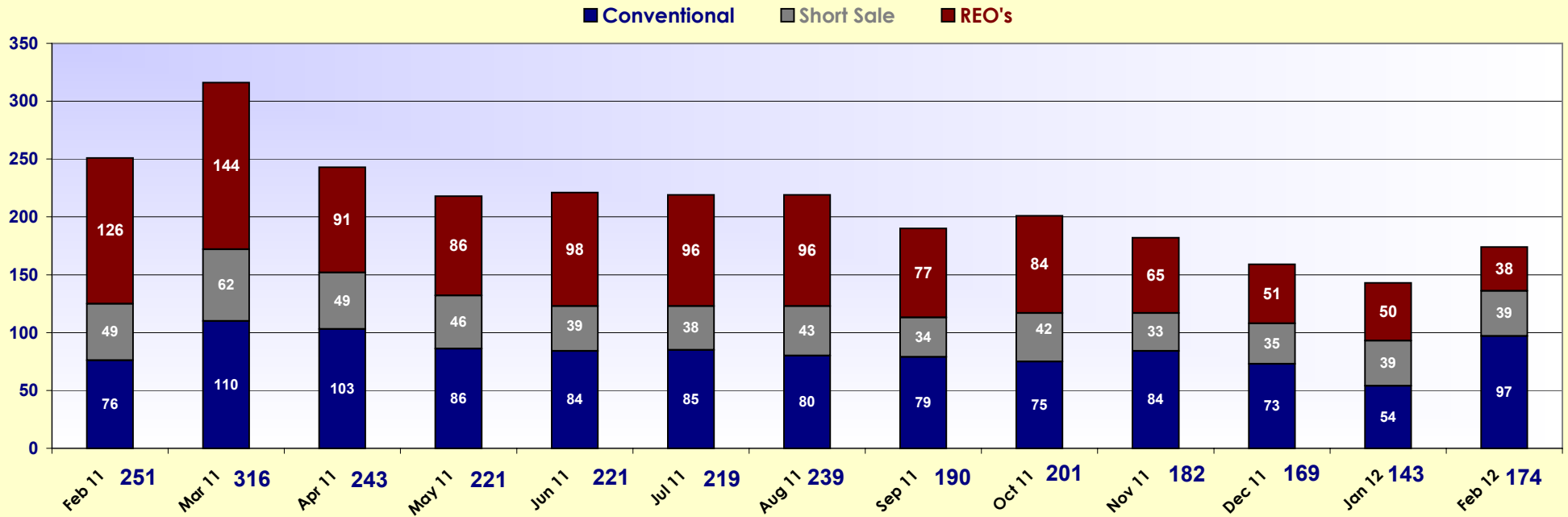
■ Conventional ■ Short Sale ■ REO's



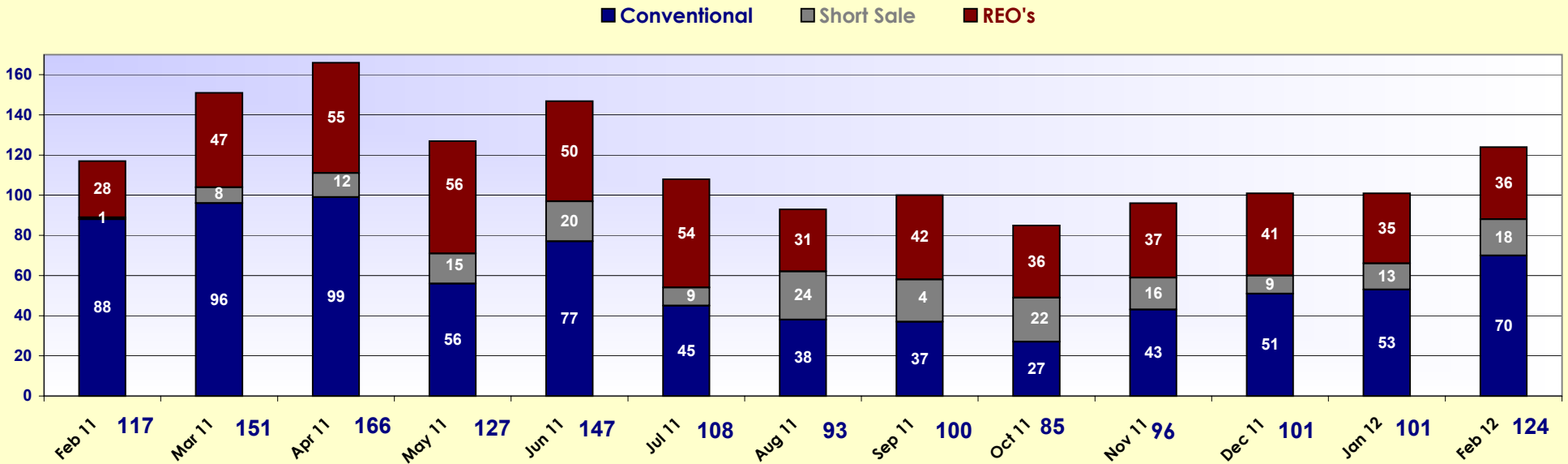
2011 / 2012 Sold Single Family - Cape Coral

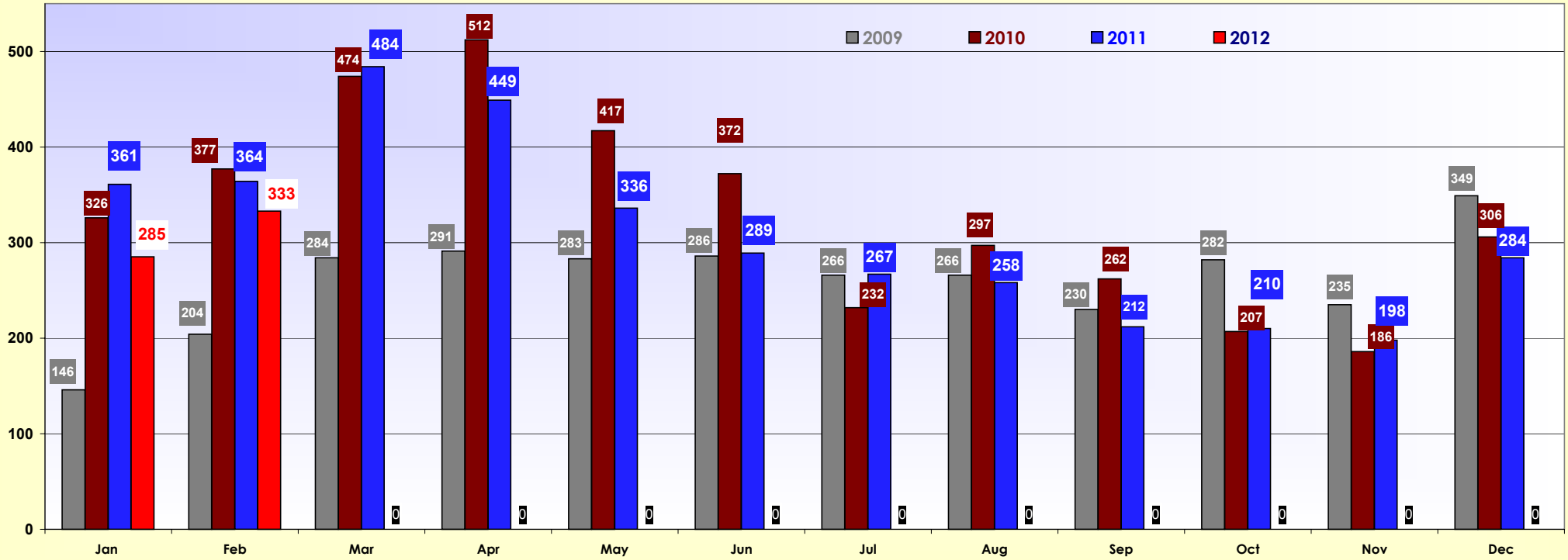
■ Conventional ■ Short Sale ■ REO's



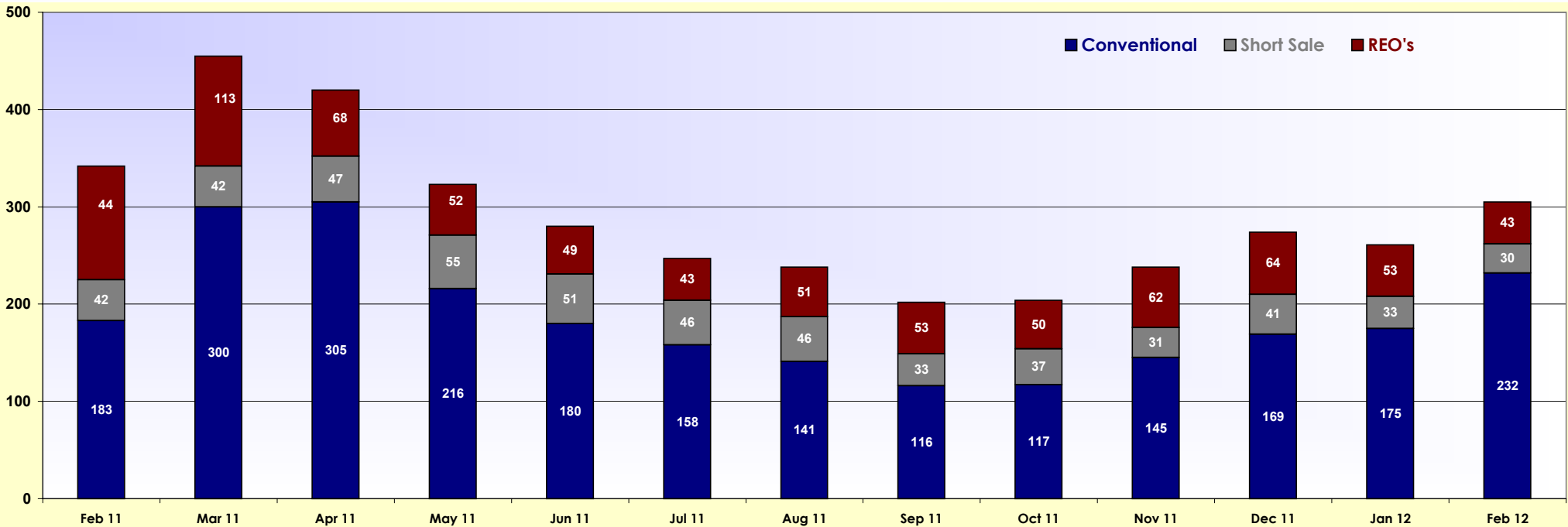


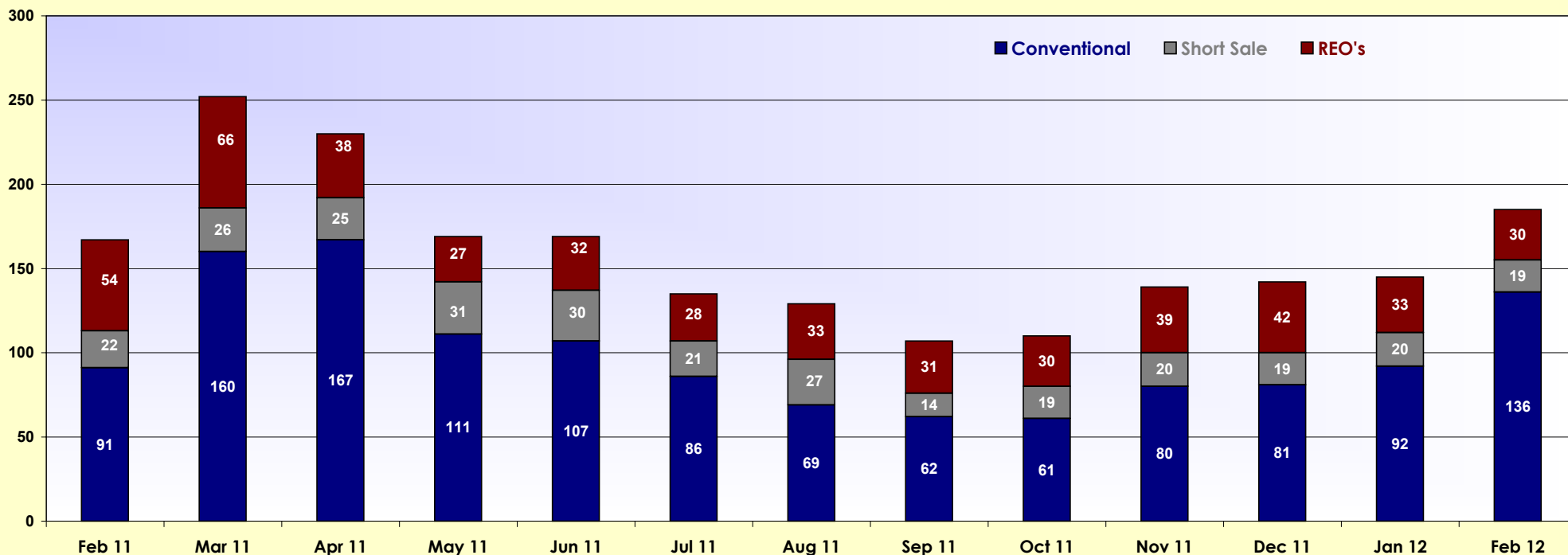
2011 / 2012 Sold Single Family - Other Areas



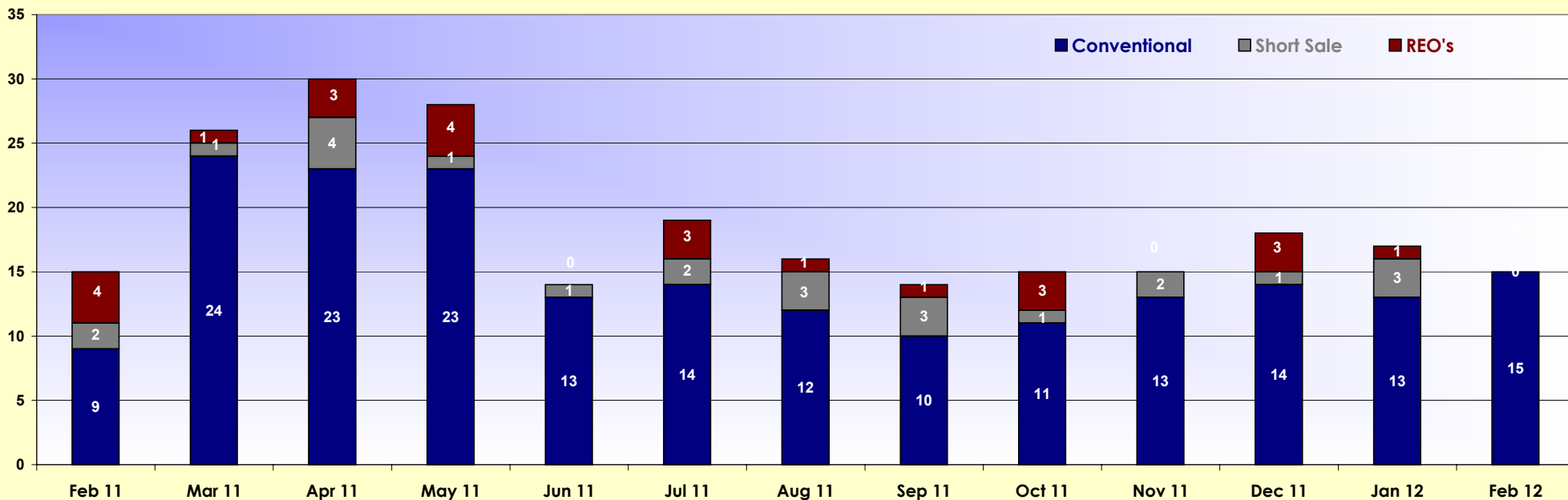


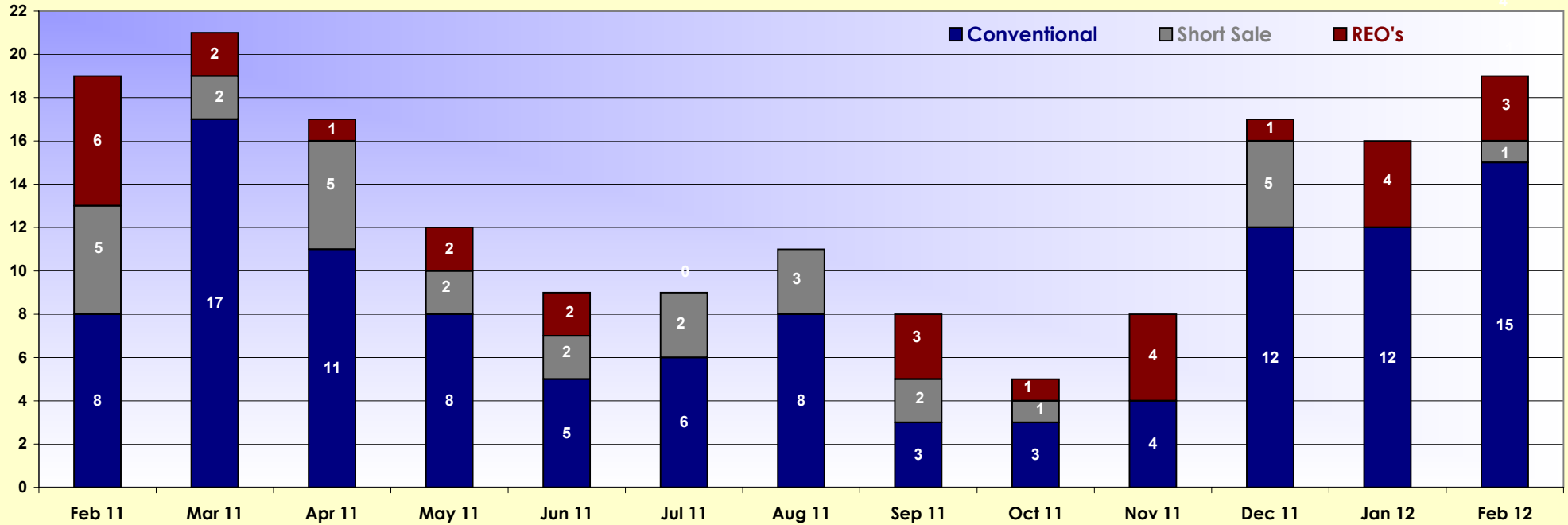
Lee County Condo's Breakout - Sold 2011 - 2012



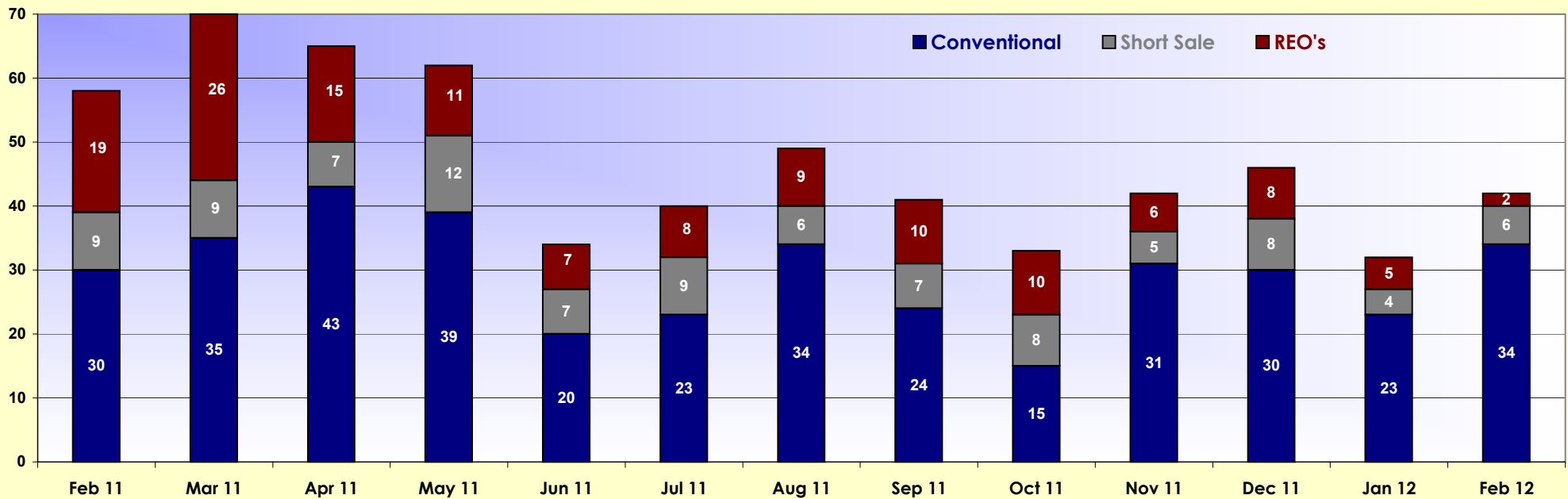


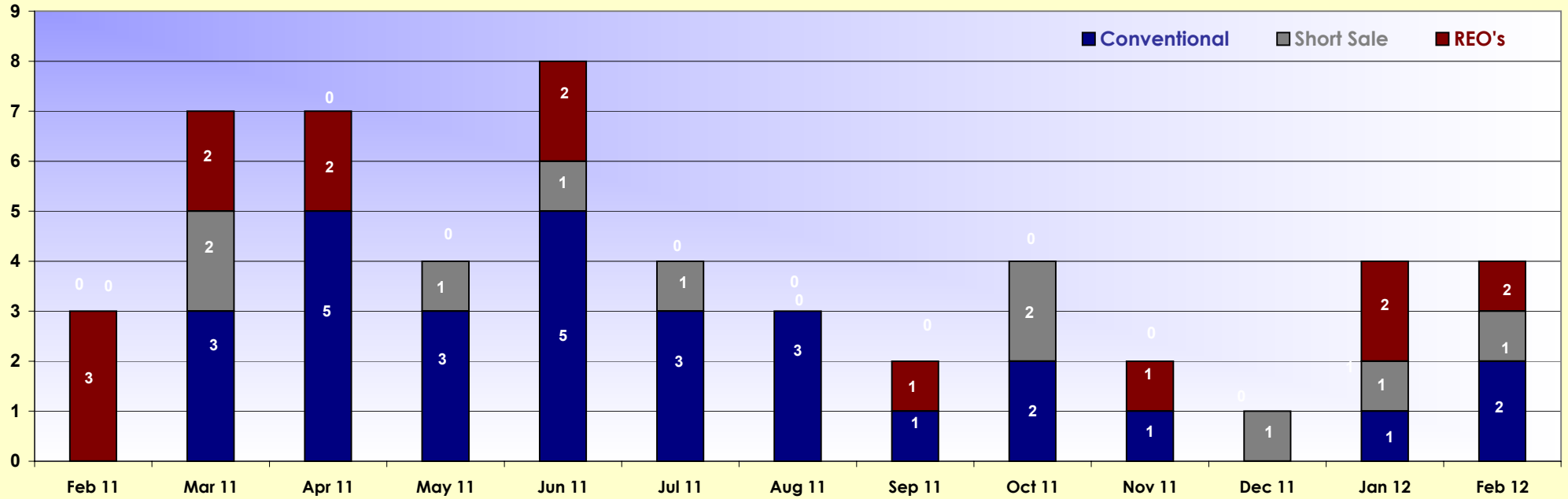
Condo's Sold - Fort Myers Beach 2011 - 2012



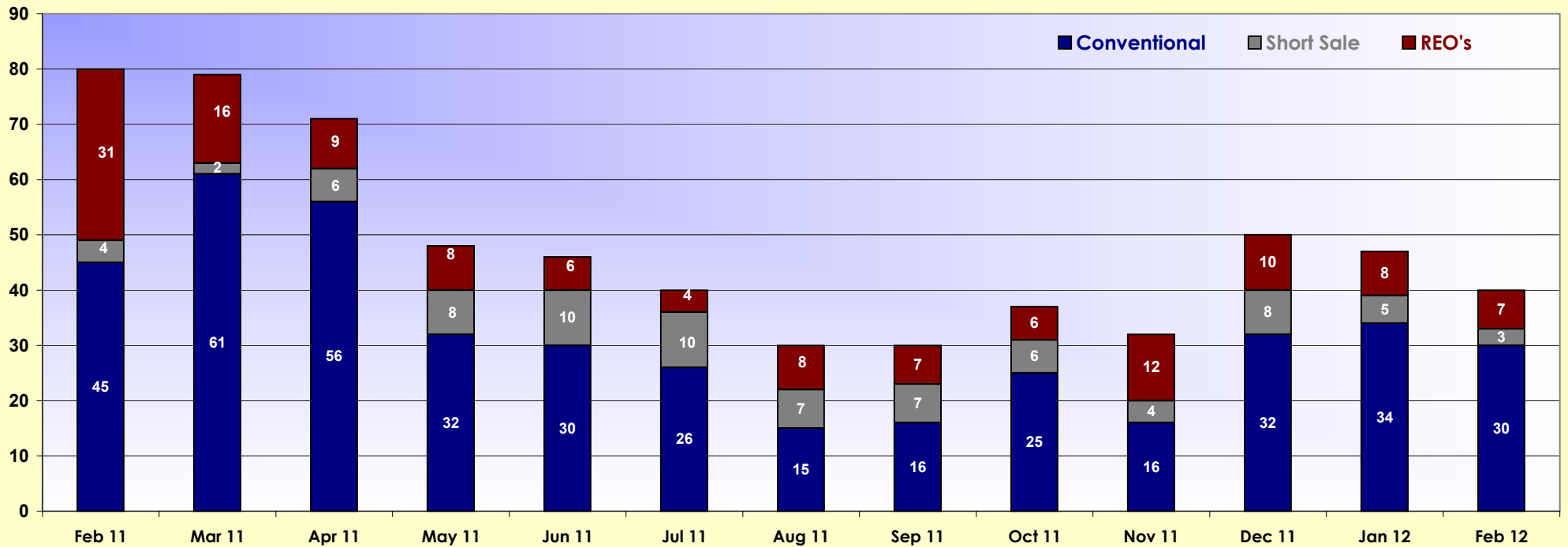


Condo's Sold - Cape Coral 2011-2012



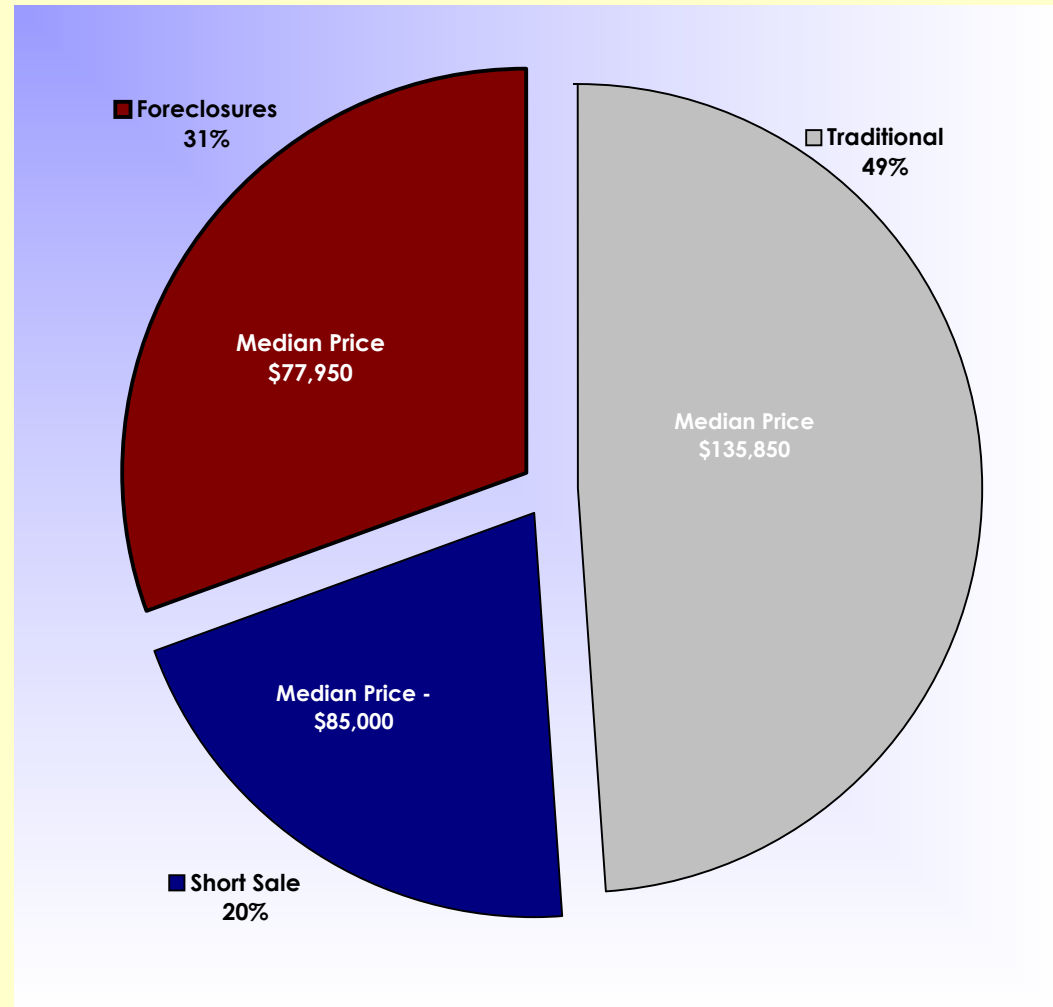
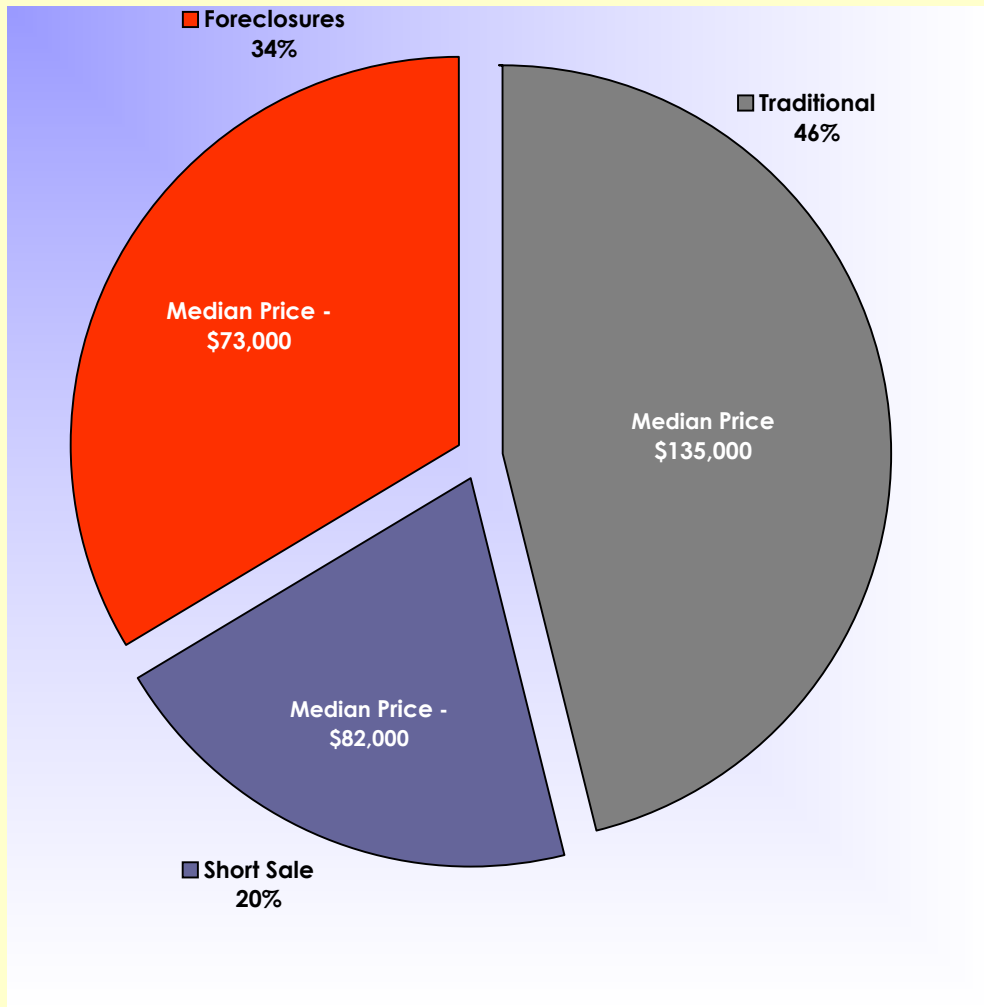


Condo's Sold - Other Areas 2011-2012



Sold Listings - July 2011 - September 2011**

Sold Listings - October 2011 - December 2011**



Sold Listings July 2011 - September 2011

	# of listings	Percentage	Median Price
Traditional	1,555	46%	\$ 135,000
Short Sale	680	20%	\$ 82,000
Foreclosures	1,130	34%	\$ 73,000
	<u>3,365</u>		

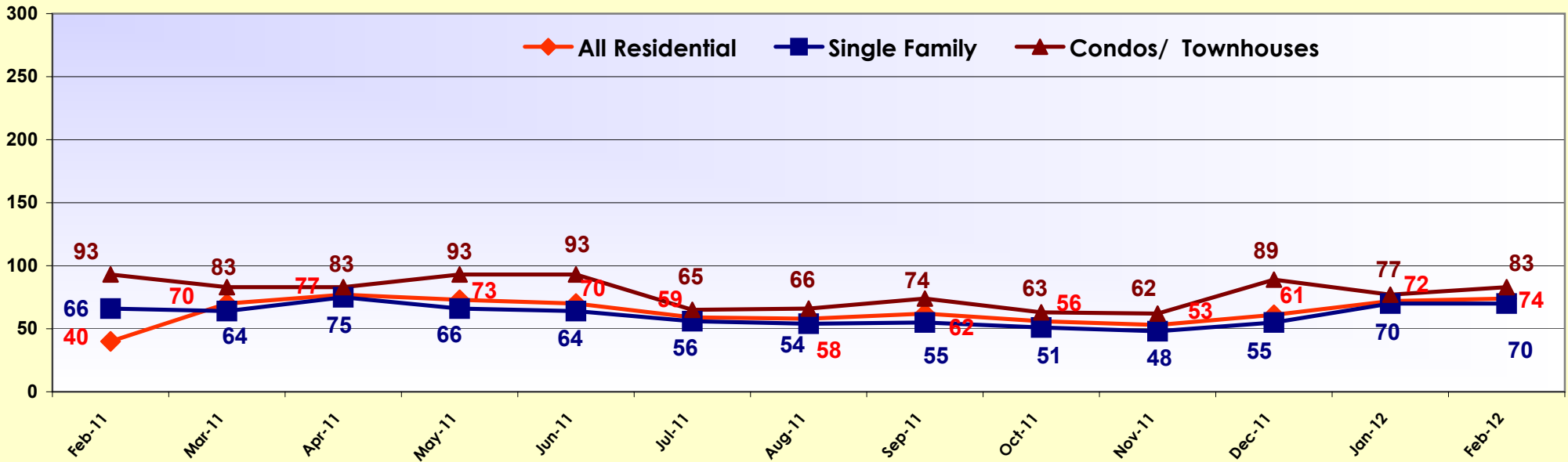
Sold Listings October 2011 - December 2011

	# of listings	Percentage	Median Price
Traditional	1,374	49%	\$ 135,850
Short Sale	571	20%	\$ 85,000
Foreclosures	860	31%	\$ 77,950
	<u>2,805</u>		

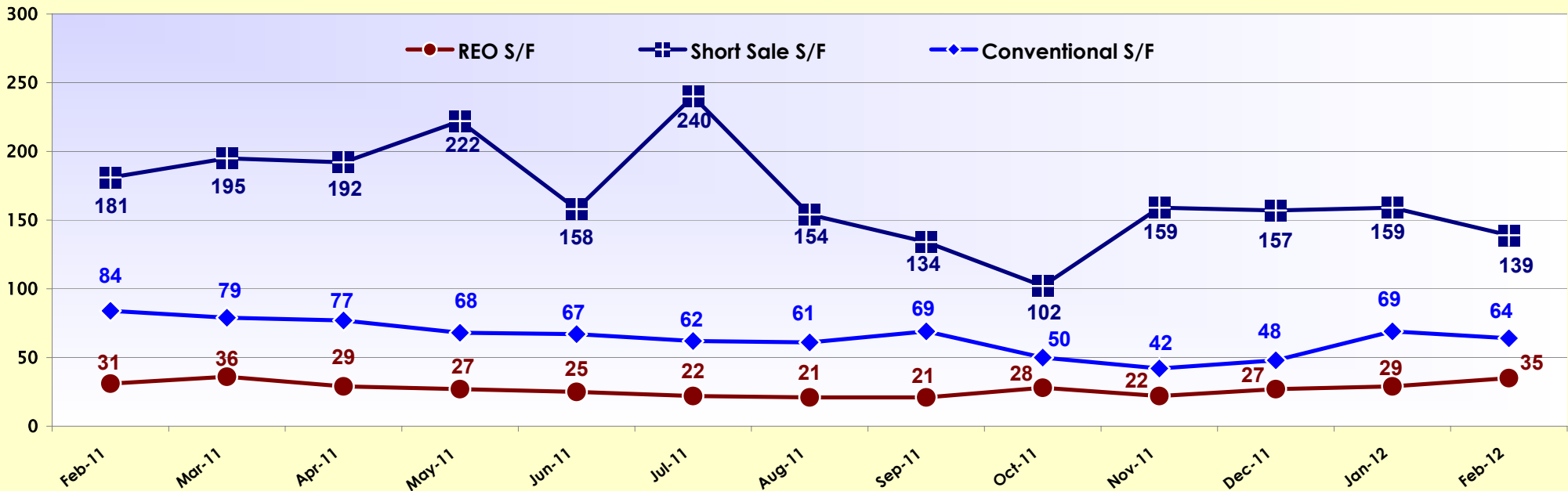
** This chart is published quarterly.

Days On Market - Last 12 Months - Sold

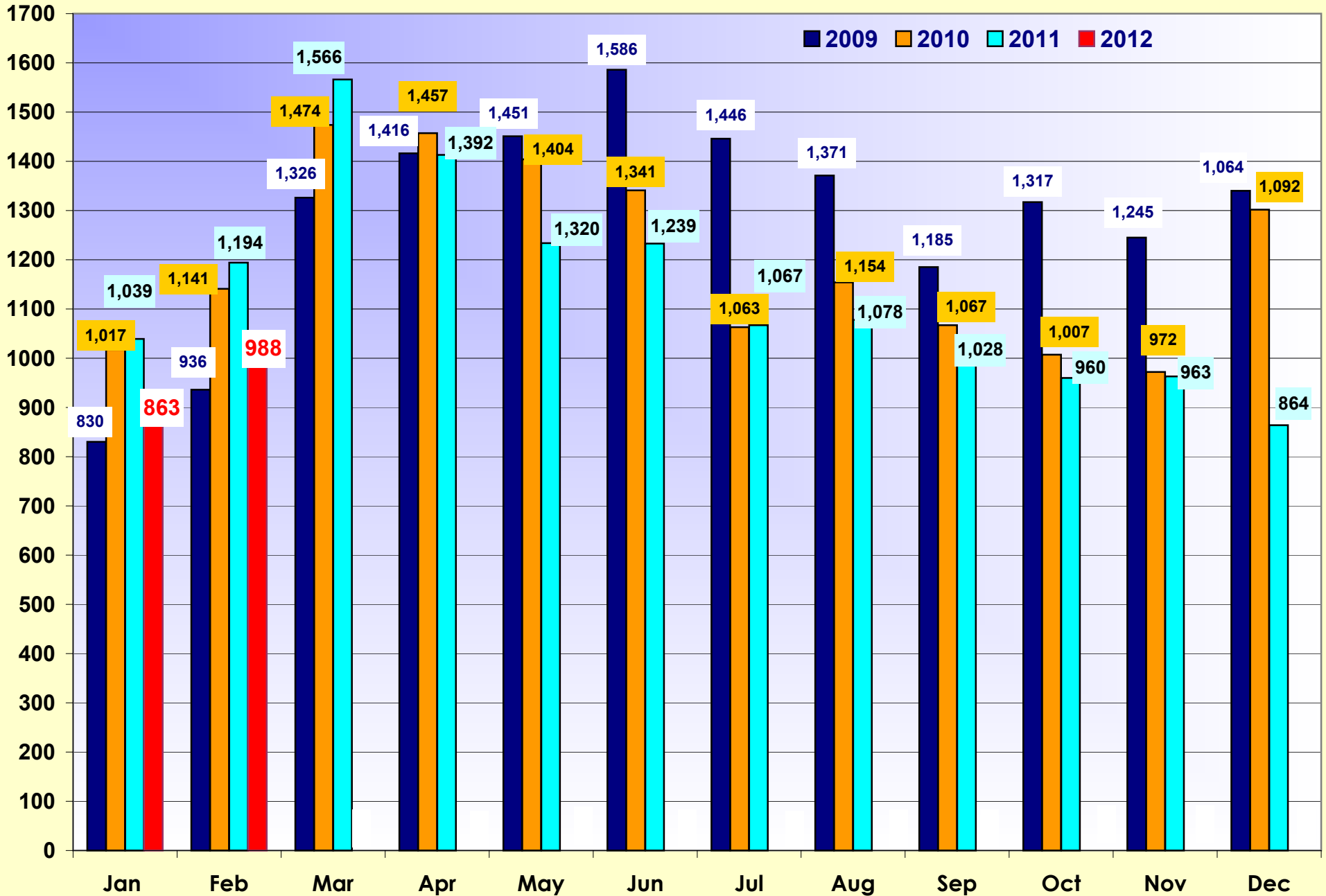
All Residential/Single Family/Condos/Townhouses



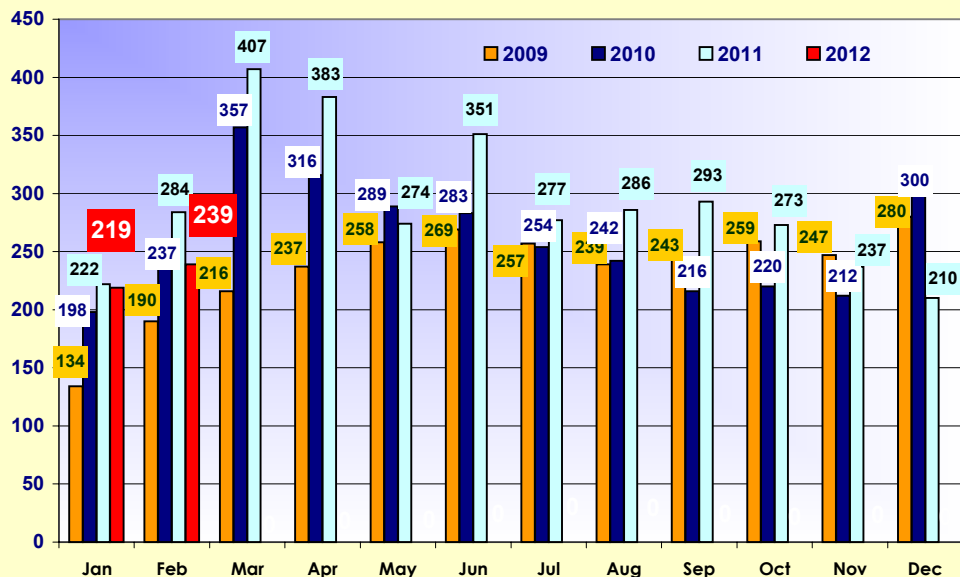
Days On Market - Single Family By Type



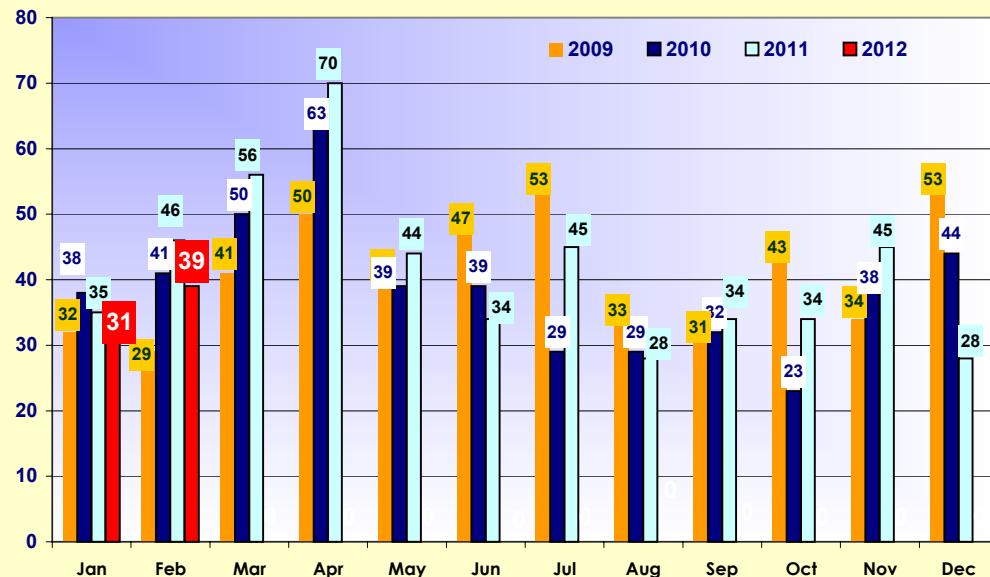
Average # of DOM for Sold Residential Listings calculated by Rapattoni



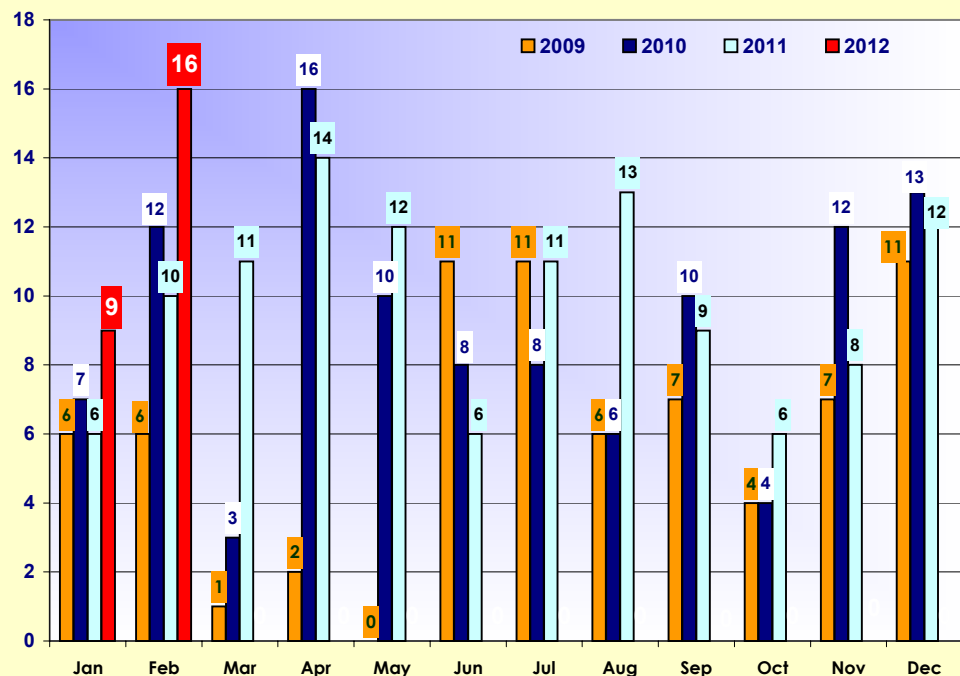
2009-2012 Sold Single Family - Fort Myers



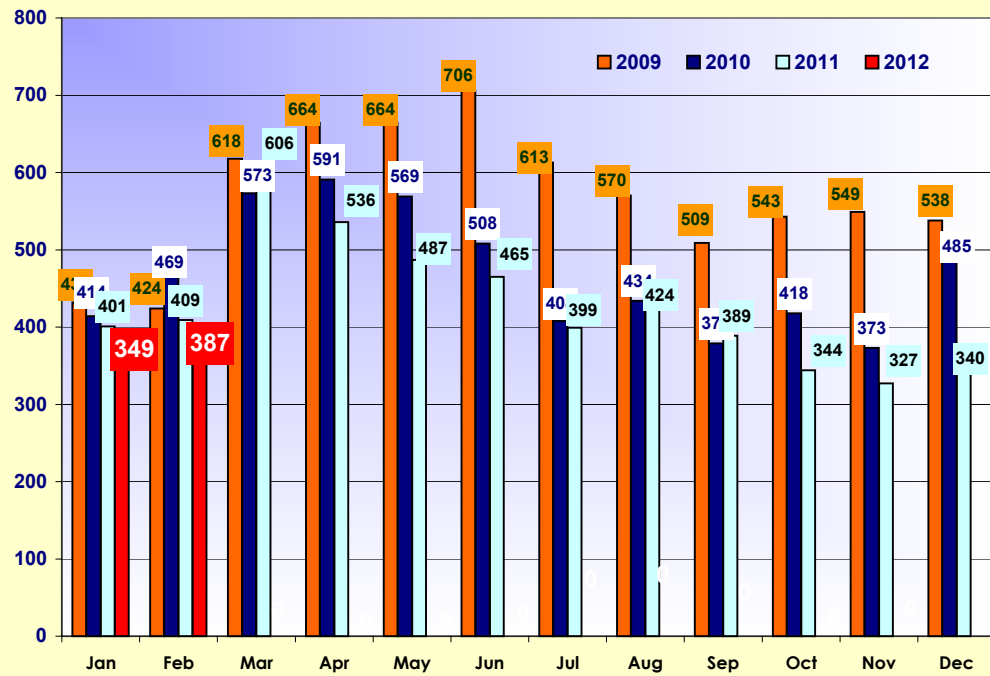
2009-2012 Sold Single Family - North Fort Myers



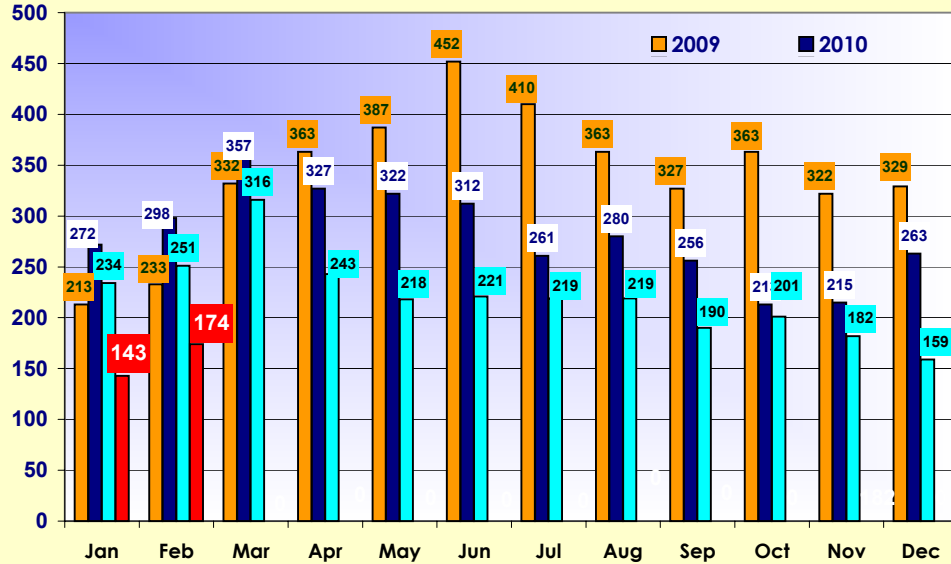
2009-2012 Sold Single Family - Fort Myers Beach



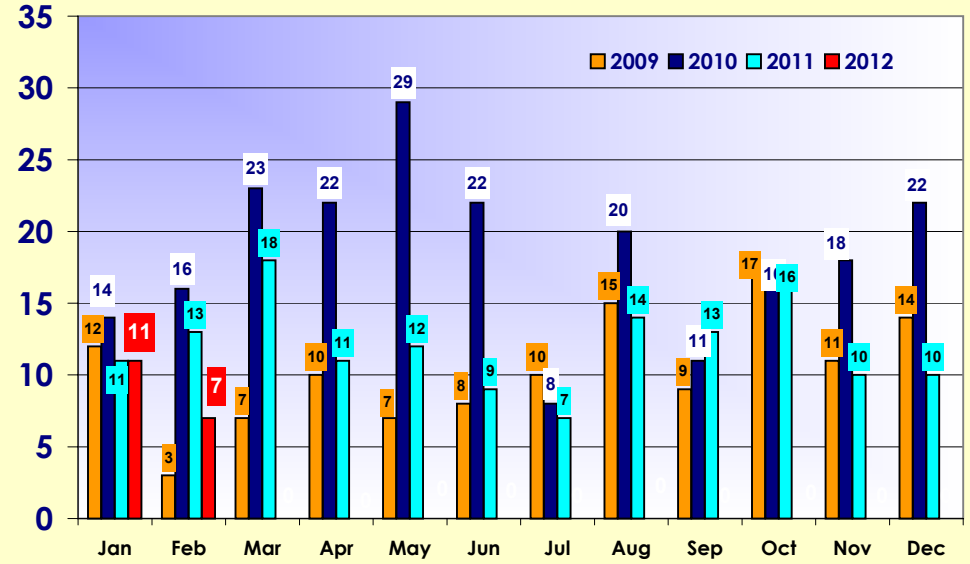
2009-2012 Sold Single Family - Cape Coral



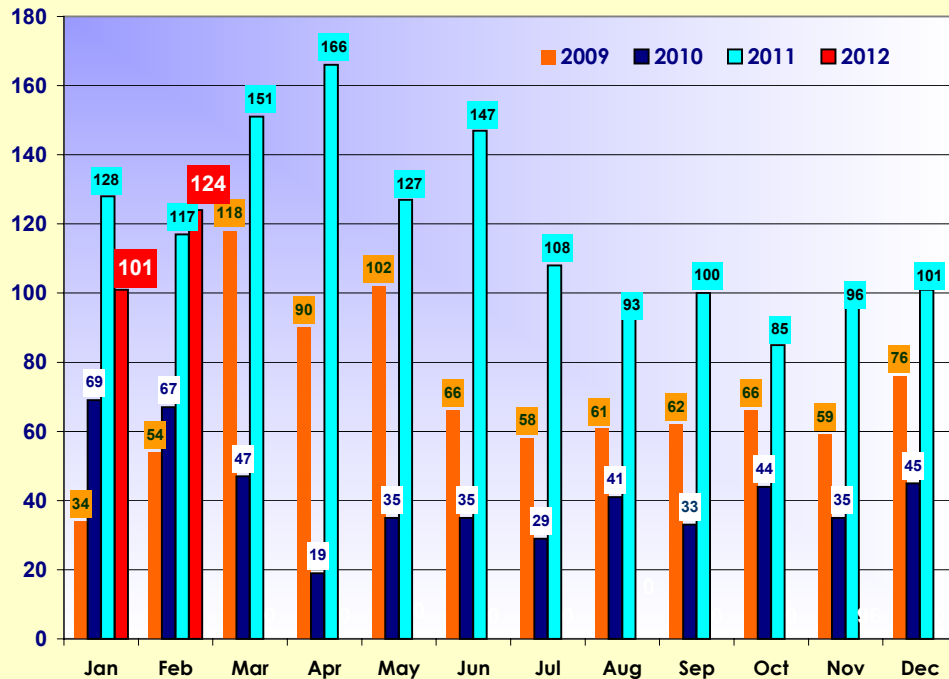
2009-2012 Sold Single Family - Lehigh Acres



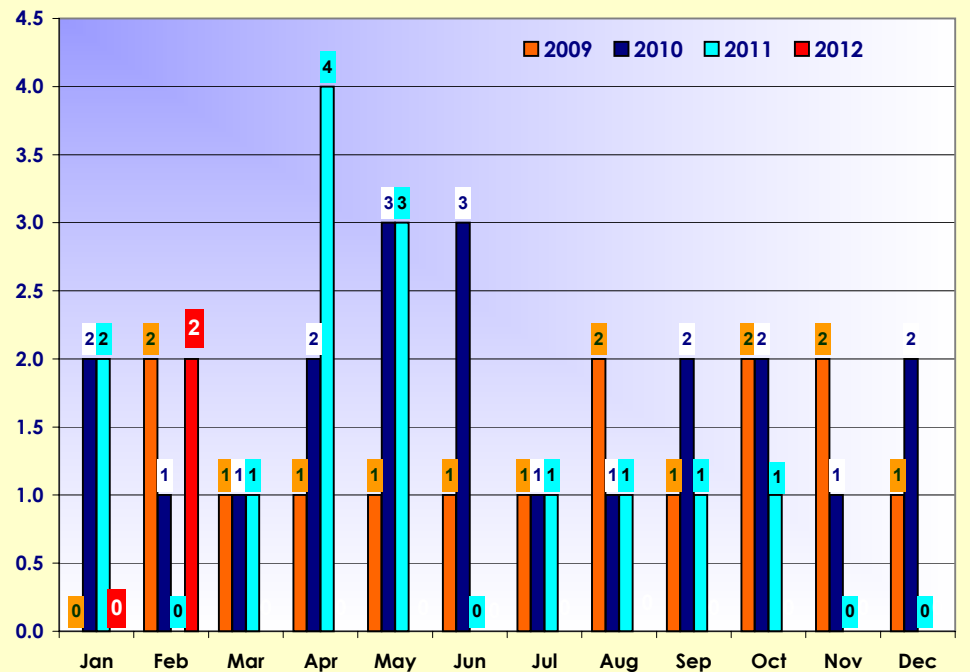
2009-2012 Sold Single Family - Hendry County

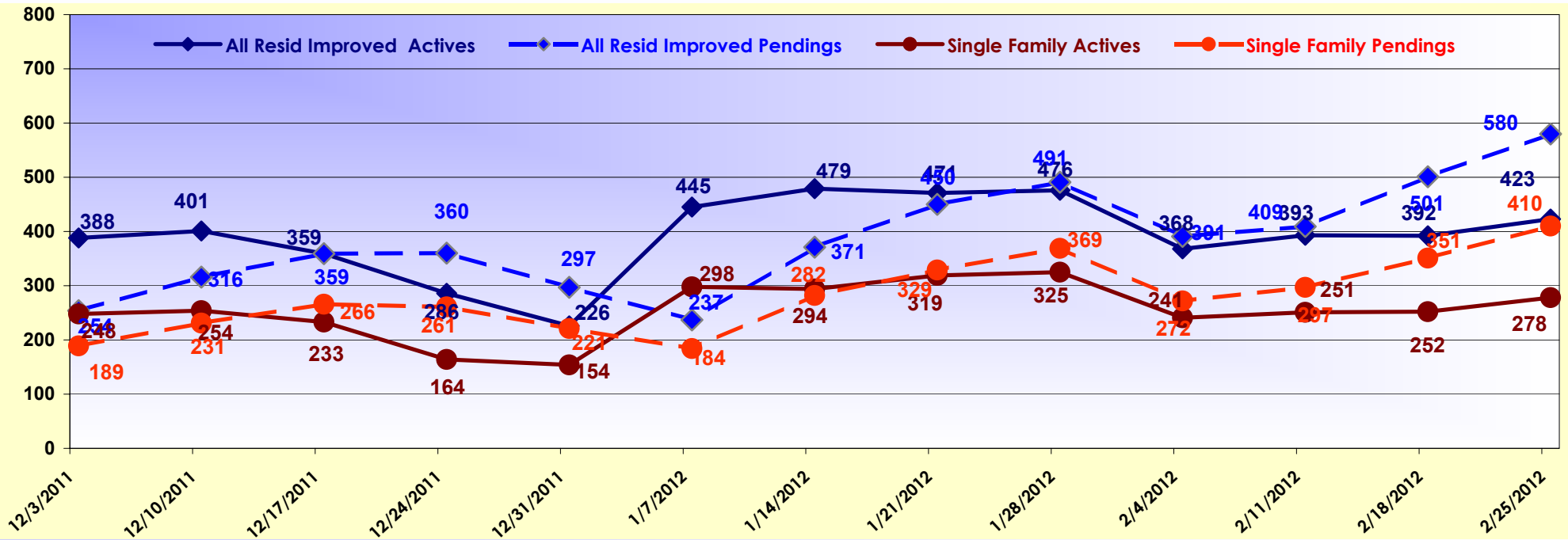


2009-2012 Sold Single Family - Other Areas

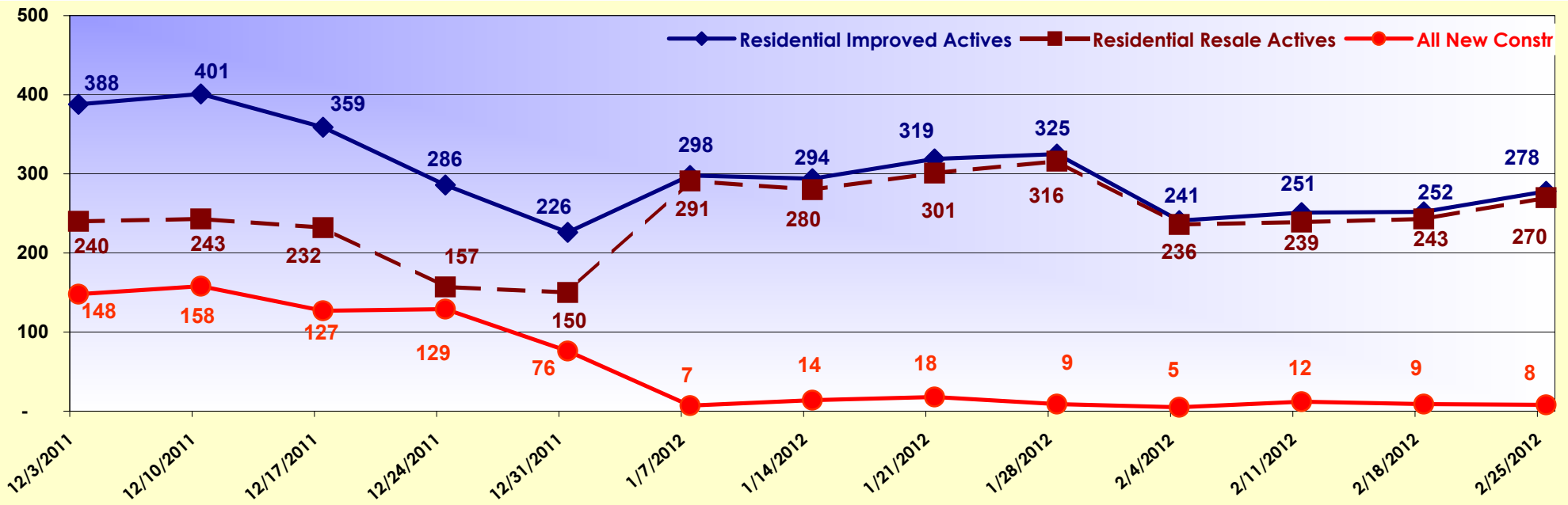


2009-2012 Sold Single Family - Glades County

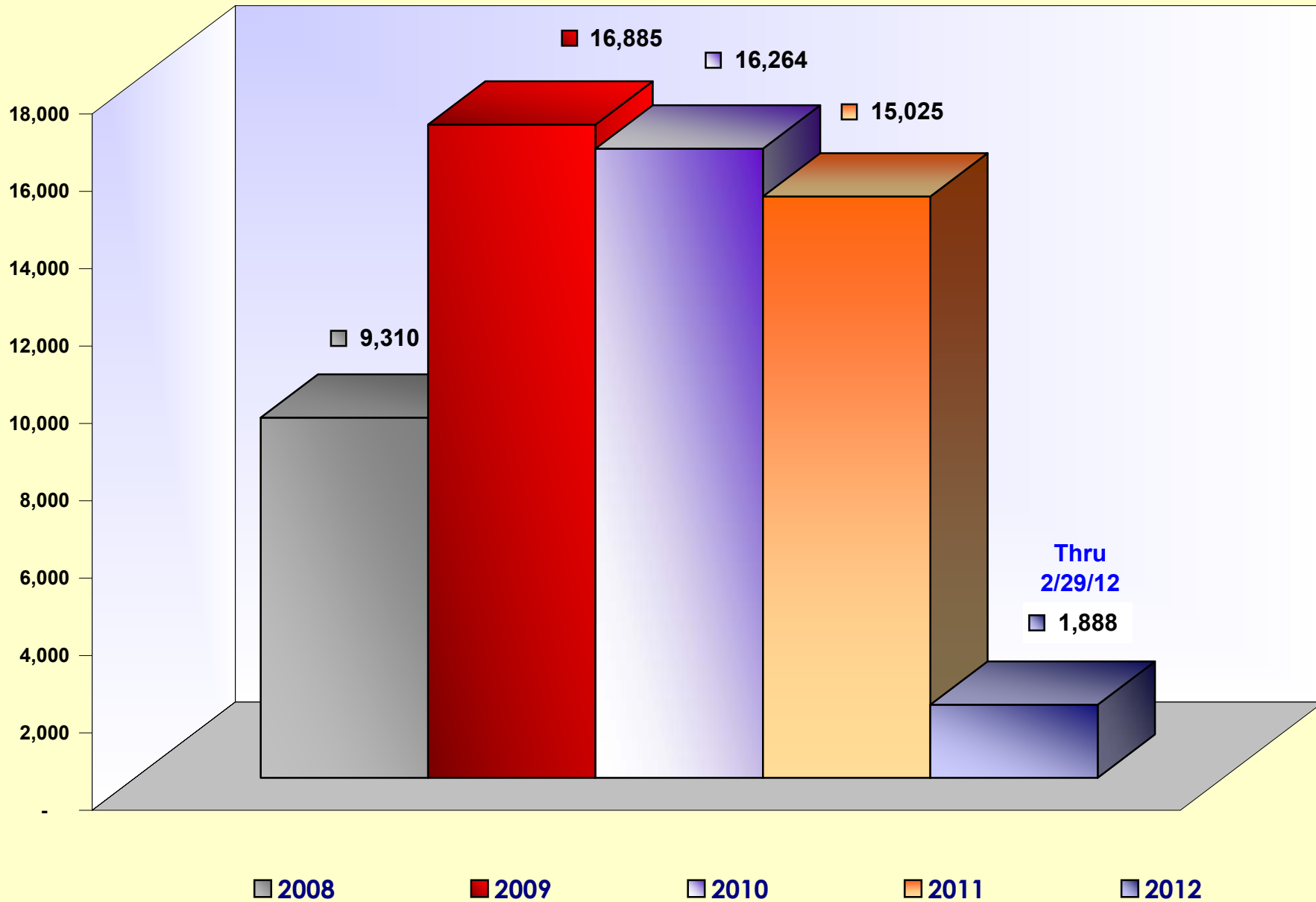




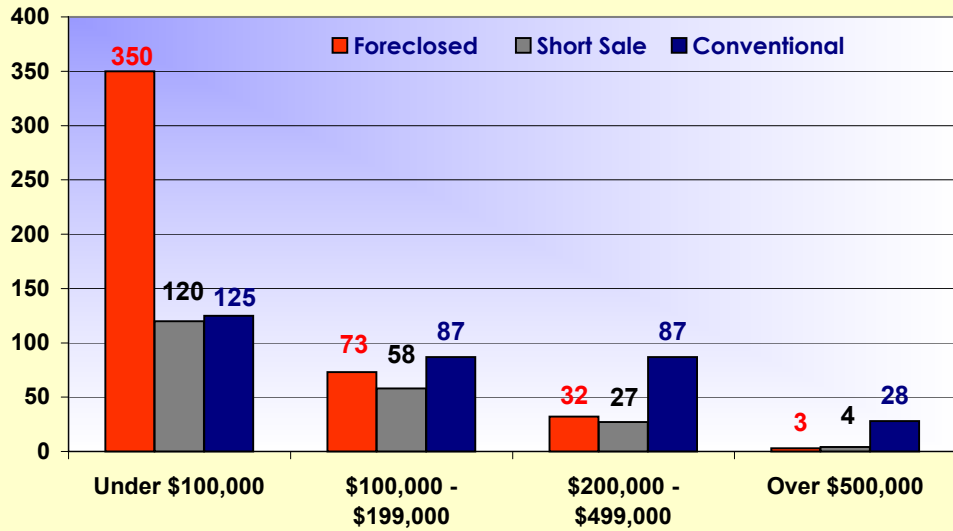
Residential Weekly Market Activity - Past 3 Months Resale & New Construction



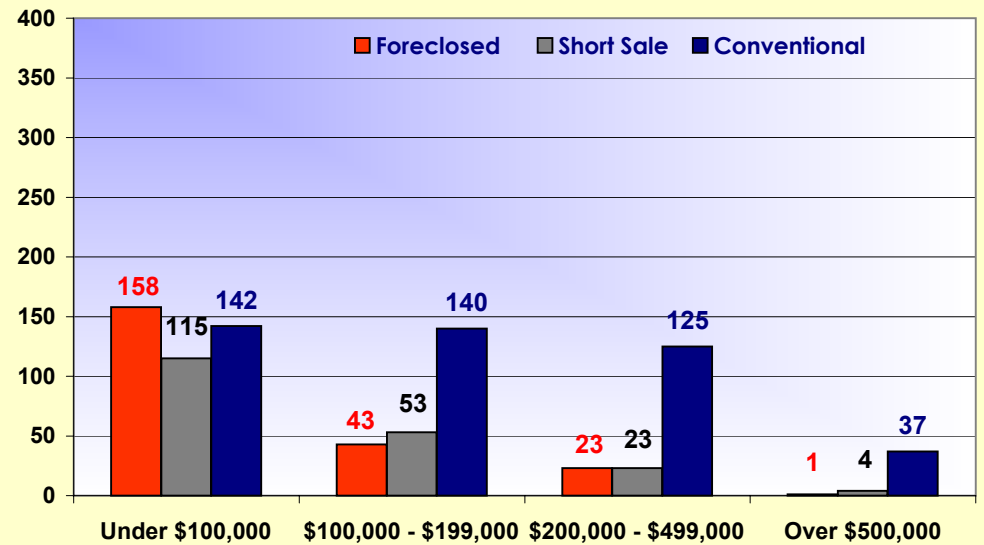
Single Family Solds By Year



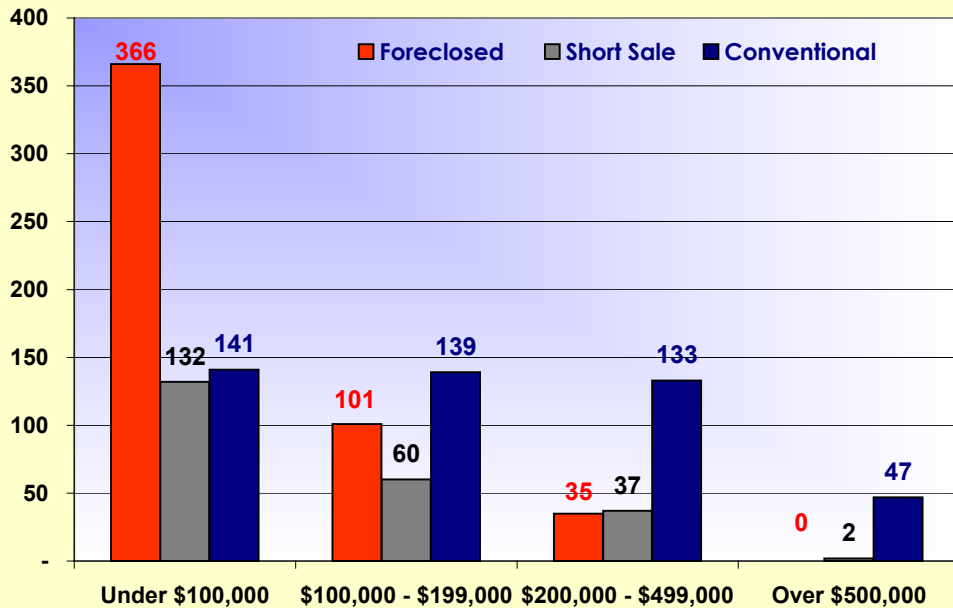
January 2011



January 2012



February 2011



February 2012

