

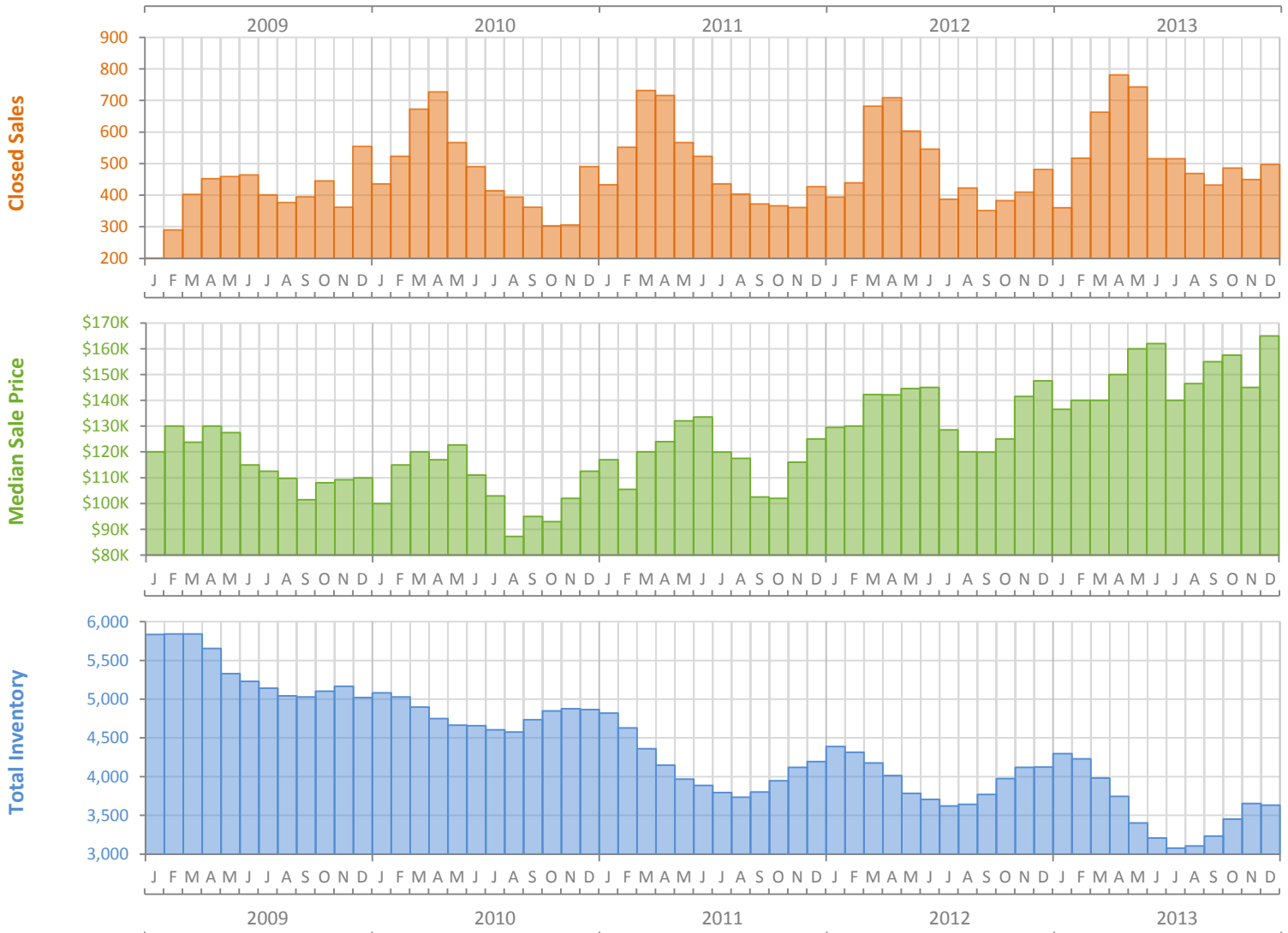
Monthly Market Summary - December 2013

Townhouses and Condos

Lee County



| | December 2013 | December 2012 | Percent Change Year-over-Year |
|--|---------------|---------------|-------------------------------|
| Closed Sales | 497 | 482 | 3.1% |
| Cash Sales | 364 | 366 | -0.5% |
| New Pending Sales | 457 | 436 | 4.8% |
| New Listings | 731 | 712 | 2.7% |
| Median Sale Price | \$165,000 | \$147,500 | 11.9% |
| Average Sale Price | \$210,207 | \$192,395 | 9.3% |
| Median Days on Market | 46 | 73 | -37.0% |
| Avg. Percent of Original List Price Received | 93.0% | 91.2% | 2.0% |
| Pending Inventory | 753 | (No Data) | N/A |
| Inventory (Active Listings) | 3,633 | 4,124 | -11.9% |
| Months Supply of Inventory | 6.8 | 8.5 | -20.4% |



Monthly Distressed Market Summary - December 2013

Townhouses and Condos

Lee County



| | | December 2013 | December 2012 | Percent Change Year-over-Year |
|-----------------|-------------------|---------------|---------------|-------------------------------|
| Traditional | Closed Sales | 421 | 384 | 9.6% |
| | Median Sale Price | \$180,000 | \$165,000 | 9.1% |
| Foreclosure/REO | Closed Sales | 58 | 53 | 9.4% |
| | Median Sale Price | \$80,500 | \$84,100 | -4.3% |
| Short Sale | Closed Sales | 18 | 45 | -60.0% |
| | Median Sale Price | \$150,000 | \$120,000 | 25.0% |

